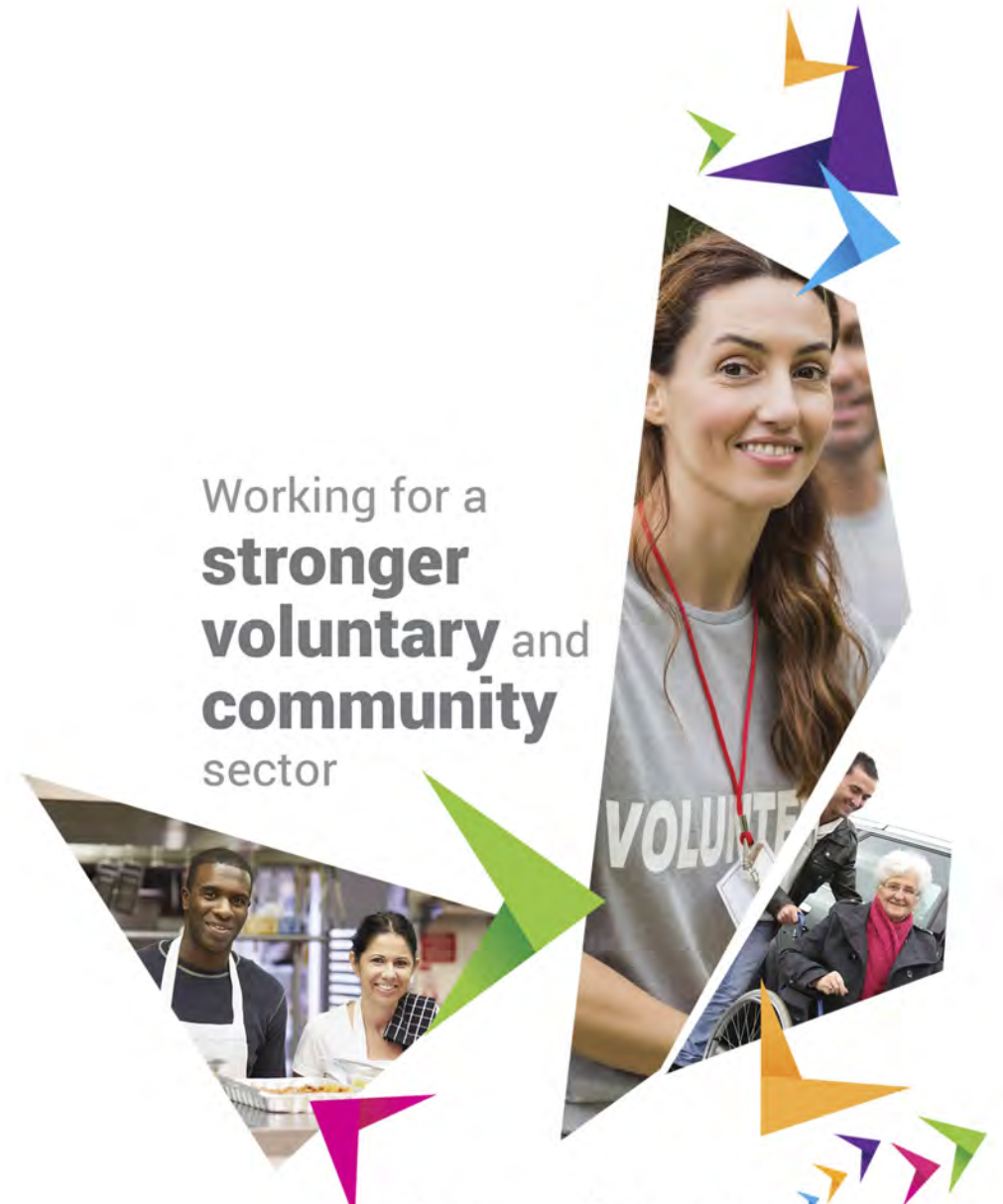


Working for a  
**stronger  
voluntary and  
community**  
sector



Annual Review  
**2018/19**

# Contents

|  |       |
|--|-------|
| Our Values and Key Achievements                  | 2     |
| Joint Message from our Chair and Chief Executive | 3     |
| Volunteer  | 4-5   |
| Inform   | 6-7   |
| Support  | 8-9   |
| Innovate   | 10-11 |
| Business   | 12-13 |
| Learn  | 14-15 |
| Engage   | 16-17 |
| Projects   | 18    |
| Acknowledgements & Thanks                        | 19    |
| Financial Summary                                | 20-21 |

© Warwickshire Community And Voluntary Action 2019

Registered Office: 19&20 North Street, Rugby, Warwickshire, CV21 2AG  
Tel: 01788 574258 Website: [www.wcava.org.uk](http://www.wcava.org.uk) Email: [information@wcava.org.uk](mailto:information@wcava.org.uk)

## Follow us



@wcavaorg



wcavaorg



Scan this code with  
your smartphone QR  
reader to read this  
report online.

## Our Vision

A thriving and well-resourced voluntary and community sector that meets community needs and provides an excellent experience for all.

## Our Mission

We promote, develop and support a vibrant voluntary and community sector to enable local people to shape and influence their communities.

## Key Achievements 2018-19



Overall, **1,022** individual organisations have received support on **1,590** specific activities.



Supported over **£5 million** worth of funding applications.



**1,124** individuals have accessed our volunteering services.



Economic value of volunteering equates to **£1,333,865** a year.



We organised **76** events and contributed to **128** others reaching well over **6,900** people.

# Joint message from our Chair and Chief Executive

The last 12 months have been a bit of a roller-coaster ride with highs and lows. Last December, Judith Morley our Chair of Trustees, who stood down for health reasons at last year's AGM, sadly passed away having bravely battled and beaten Cancer. Judith was a great advocate for the sector and in particular the youth sector.

Judith was the visionary for the merger between Warwickshire Children and Voluntary Youth Service and Warwickshire CAVA in 2015. As a resident of Solihull, Judith had been a great advocate and supporter of extending our approach and support into Solihull. It is with great sadness that whilst we realised that ambition of securing the Infrastructure support contract for Solihull in December 2018 for delivery from 1st April 2019 that Judith never saw this achievement.

Increased partnership working and innovative ways of working smarter in order that we can continue to provide high quality Infrastructure Support across Warwickshire and Solihull is an essential part of our strategy going forward to help meet the ever increasing demand for support faced from groups, organisations and volunteers who are being asked to do more with ever decreasing resources.

2019/20 will see the organisation reshape to better manage the demand we face from our members within the reduced resources available whilst still covering our increased geography of Warwickshire and Solihull.

2019 sees a year of significant change for the charity as both of us stand down this year, Katy on completion of the maximum 9 consecutive years of service allowed by our governing document, and Paul as he moves on to pastures new in the Voluntary Sector.

Since 2008 we are proud to have supported the voluntary sector in Warwickshire and have:

- Supported the sector to access over **£29m of funding**
- Supported over **9000 groups and organisations** to develop
- Connected over **16,500 volunteers** to make a difference in their communities

We wish to thank all of the current and past trustees, staff, volunteers, funders, allies and supporters who have all helped Warwickshire CAVA to establish, achieve and thrive whilst supporting our members to do exactly the same.



Katy Harper, Chair, WCAVA



Paul Tolley, Chief Executive, WCAVA



WARWICKSHIRE  
**CAVA**  
COMMUNITY & VOLUNTARY ACTION

# VOLUNTEER

Warwickshire CAVA aims to ensure that every volunteering experience is of the highest quality and that the skills and energies of volunteers are targeted to making the most difference within local communities across the county.

## **Making Volunteering Accessible - Warwickshire Probation Service**

Volunteering isn't easily accessible to everyone in our communities. We partnered with Warwickshire Probation Service to enable residents at one of their hostels in South Warwickshire to participate in volunteering activities that took into account the restrictions that many of the men have to comply with as part of their Probation Agreement. The aim was to reduce the men's boredom and to give them something productive and meaningful to do each day by bringing volunteering activities into the hostel setting.

It proved more difficult than anticipated to identify tasks that could be undertaken remotely and also to convince groups to think outside the box and work with the Probation Service and ourselves. Out of twenty groups contacted, our Volunteering Coordinator in Warwick District eventually identified three who were prepared to take on the challenge. These were Tools with a Mission (TWAM), Helping Hands Community Project and Warwick Poppies. The three groups met with the Probation Hostel Manager to identify how they could work meaningfully and safely with the men.

Warwick Poppies delivered a workshop in the hostel to train the residents to make felt poppies to be displayed in the Collegiate Church of St Mary Church Warwick as part of the 2018 Centenary of the Armistice.



“ As a **new** Volunteer Coordinator, the **support** I received from **Warwickshire CAVA** as well as the **forum** day has **greatly increased** my **knowledge** and **confidence**. ”



The men met twice a week for a couple of months and contributed to the spectacular display of 62,438 poppies that was the commemoration centrepiece unveiled in October 2018. One of the older residents made an amazing model of St Mary Church, decorated it with poppies and presented it to the church as a thank you for the opportunity to volunteer.

The feedback from the Charities, Probation Officers and hostel residents has been overwhelmingly positive - volunteering has enriched the lives of the residents, given them new skills and enabled them to make a positive contribution to their local community.

### **Employer Supported Volunteering (ESV)**

We are being increasingly approached by organisations in the Private Sector looking for opportunities for their staff to volunteer in work time. Evidence shows that enabling staff to volunteer brings positive benefits to the workplace with more motivated staff and a decrease in sickness levels. ESV can make an enormous difference to local communities also.

St Margaret's Church in Wolston wanted to give a much needed facelift to rooms used on a regular basis by Community Groups such as the playgroup and men's breakfast club. The church members were already overstretched maintaining the church and churchyard and wondered if there were additional volunteers who could help out with decorating.

Our Rugby Volunteering Coordinator had recently met with Barclays Bank in Rugby and knew they were keen to encourage their staff to volunteer and therefore linked them with St Margaret's. In no time at all the business team at Barclays had completed decorating the community rooms much to the delight of the Vicar at St Margaret's.

There was a positive impact on the team at Barclays also and they have made a commitment to participate in an ESV activity every six months.

# INFORM


Warwickshire CAVA works hard to ensure that the local voluntary and community sector is as informed and up to date as possible on the changing local landscape so that they are able to take advantage of the latest opportunities and have influence.

## Small Charities: Big Impact!

In partnership with North Warwickshire Borough Council (NWBC) we hosted a wonderful event within the National Small Charity Week; it was a great opportunity for Community and Voluntary Sector organisations to showcase the diverse services they provide to residents in the rural villages of North Warwickshire. With over 60 people attending, we had presentations, stalls and displays, it really was a lovely celebration of the small charities, groups and organisations running in the north of the county who are primarily led by volunteers.

## Joint Strategic Needs Assessment (JSNA)

The JSNA analyses the current and future health and wellbeing needs of local populations to inform the commissioning of health, wellbeing and social care services. In each area, our teams have been heavily involved in supporting the collection of data and evidence alongside our partners through steering groups and handing over our CAN meetings (now called WCAVA Engage events) to highlight the importance of the role of the Voluntary and Community Sector.



Distributed **155**  
e-bulletins, increasing our  
range to include Children  
& Young People, Funding  
and Locality editions

### Our Rugby, Our Future

Each year we are very proud to be part of the planning and delivery of the 'Our Rugby Our Future' event; this is always very well attended, celebrating and sharing the diversity of services from the voluntary community and public sectors. The 2018 event was no different, with 61 stalls and over 150 people in attendance. Our priority has always been to showcase the great work in communities and to provide a space for networking and building mutual understanding.

### Our Parish

We work intensively with some of the most rurally isolated communities in Warwickshire. Through our Rural Life project in South Warwickshire we have supported the village of Bishops Tachbrook to engage with more residents and help them to identify opportunities for new groups and activities. Through our links across the sector Warwickshire CAVA was able to promote a range of services available to rurally isolated residents, and we are hoping that the links made with the County's Cyber Security team might encourage the establishment of a computer group. We will also be looking into setting up a Dementia support group.

“ We had a **great time**. It's so **good** to **get together** and **hear** about the **exciting work** that is being done in the **community**. ”



WARWICKSHIRE  
**CAVA**  
COMMUNITY & VOLUNTARY ACTION

## Rural Life Project

What do you love about where you live?

We're sure there are lots of things, but if you think it could be even better, we may be able to help!

Would you like to...

- take part in local activities?
- see your village hall used more?
- help a local cause?
- be more involved in your village?

Find out more...  
T: 01926 477510 E: rural@wcava.org.uk

Page 7

# SUPPORT

Warwickshire CAVA offers a range of support services and advice to small and emerging community groups, voluntary organisations, charities and social enterprises across Warwickshire, as well as supporting both existing and larger organisations to strengthen and develop.

## Cohort4

Cohort 4 supports women in the community who have multiple and complex needs; this might be survival of domestic and/or sexual abuse, mental ill health, addictions, previous criminal convictions or acute loneliness and isolation. The women they work with come from Atherstone, North Warwickshire, Nuneaton, Bedworth, Tamworth and surrounding areas. They offer women a safe space to socialise and develop their skills, through jewellery making, craft classes, outings, events and training opportunities.

Warwickshire CAVA helped Cohort4 to secure £71,873 from the Big Lottery Community Fund which will ensure this social enterprise will continue operating well into 2022. For the second time, they also received an award of £800 from the High Sheriff's Community Award to acknowledge their *'great and valuable work in the community of Warwickshire'*.

## Caterpillar Café

Caterpillar Café was set up by two parents with small children who found there was a lack of provision for parents with pre-school children in Stratford. There are plenty of cafés in the town, but these are less than ideal for toddlers, so in partnership with Escape Arts the mums initially set up Caterpillar Café in the Old Slaughterhouse café once a week.

“ I wish to **thank you** personally for **assisting us** both in our **funding bid** and in **championing** our work. You are **fabulous** in **encouraging** small **voluntary organisations** like ours. ”





This meant they were able to provide a space where parents could meet and have a coffee with other parents, and their children could play and learn.

With our help, they have adopted a constitution and set up a committee, they have worked with our Children and Young People's Lead to develop a safeguarding policy and procedure. We subsequently supported the group with identifying and applying to funders, to support their move to larger premises; so in July 2018 Caterpillar Café was awarded a grant of £2,000 from Stratford Town Trust, enabling them to move to Tyler House, where they can host many more parents and children. They continue to offer a range of workshops and activities for parents and children.

### **Nuneaton Street Art Festival**

Reel People is a Community Arts Group who want to bring art, film, dance and music to the people of Nuneaton; much of this work has been around coordinating graffiti arts projects, engaging with local young people, encouraging their talent and passion for street art. They came to us with the idea of creating Street Art Festival, which celebrated the diverse range of artists locally as well as creating vibrant pieces of artwork to brighten up areas of the town, for people to be proud of. We worked with the group on the project development and funding applications and they secured £1,000 from Heart of England Community Foundation; in addition they secured sponsorship and support from a range of local businesses, including the Griff and Coton Sports Club so they could run it as a family fun day event. The day of the event was a rousing success, with hundreds of attendees with some stunning artwork created that will last for years to come. Following the event's success they have had been able to run a number of other events, including a Break Dancing Festival, and another planned to celebrate George Eliot's bi-centenary year.

# INNOVATE

We work hard to bring new and exciting ways of working to Warwickshire, often by incubating, developing or replicating examples of national best practice in partnership with our members.

## Talent Match

Talent Match was a £106 million programme funded in 21 areas by the Big Lottery Fund to support young people aged 18 to 24 who need extra support to help them along their path to employment. The 5 year Talent Match Coventry and Warwickshire programme ran until March 2019 as one of the 21 Local Enterprise Partnership areas in the country where the highest level of need was identified, and in Coventry and Warwickshire has now been succeeded by the 'Linking Futures' project.

Building upon the success of Talentmatch, Linking Futures will support young people to explore social enterprise as a method of developing skills and giving back to the communities that have supported them.

## ConnectWELL™

Our dedicated project supporting individuals and healthcare professionals to connect with the vast array of local Community and Voluntary sector based activities. The aim is to improve health and wellbeing, so we regularly connect people with advice and information services, community groups, leisure activities, lunch clubs, self-help groups, specialist interest groups, sporting activities, and lots, lots more. The project has increased its reach and impact supporting those with breathing disorders through the RIPPLE project, developing partnerships with Myton Hospice for Take a Breath and expanding support into Nuneaton and Bedworth.



“ It's always **good to learn** new things and **develop skills/knowledge**. Warwickshire CAVA has **consistently helped** with that. **Thank you!** ”

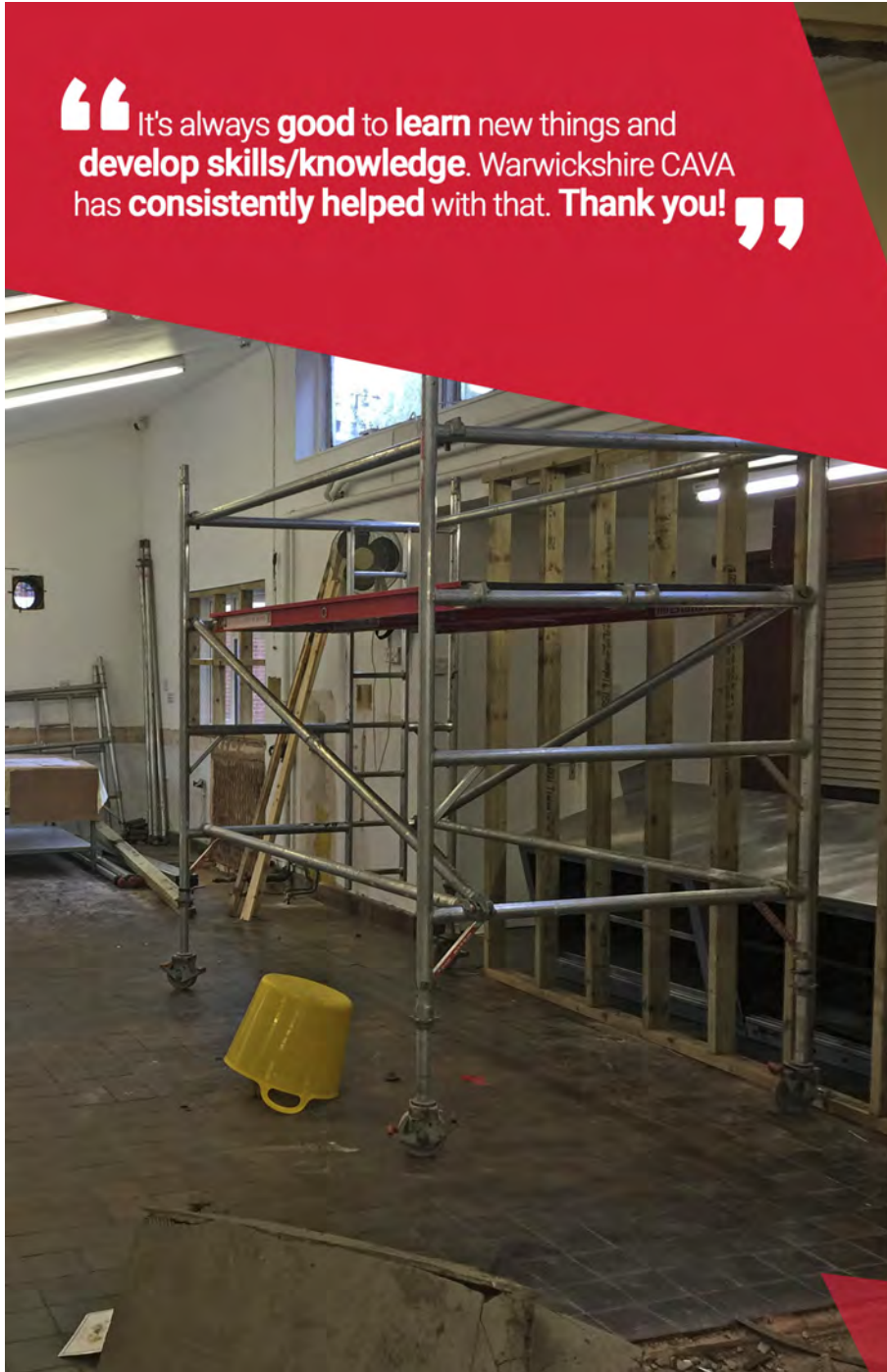
### **Big Local in North Warwickshire and Nuneaton and Bedworth**

We continue to be engaged as the 'locally trusted organisation' for two areas of targeted investment in the North of Warwickshire. HTC and the Leys both have resident-led Big Local Partnerships who are each responsible for using at least £1 Million over 10 years to make a massive, positive and lasting difference to their communities. Each of these two resident-led partnerships has developed their own planned and coordinated responses in light of evidenced needs, addressing issues such as youth engagement, unemployment and issues around poverty. The resident-led partnerships are increasingly being recognised as agents for change in their own communities.

### **Development of the Newtown Centre**

As part of our continuing commitment to sustaining a local team presence in every Borough and District that we operate within, 2018/19 saw our innovative approach to partnership working with Nuneaton and Bedworth Borough Council continue to flourish through the increased use, development and resources brought to bear to turn the Newtown Centre in Nuneaton into a thriving community resource.

Having already increased the use of the centre by 300%, enabling access to employment, health, wellbeing and services addressing social isolation, we have successfully secured funding from the Garfield Weston Foundation's Anniversary Fund. This investment will see the Newtown Centre's third and final phase of planned development increasing the versatility of the building and with a kitchen refit - even more social eating and cooking projects planned for the future.



# BUSINESS

Warwickshire CAVA builds its development on strong foundations and evolves to meet the developing needs of its market to ensure we have the resources to deliver into the future.

## Back Office Support Services (BOSS)

We continue to work closely with our framework of suppliers and are pleased to offer an additional accountancy support option via Paula Wilson Accounting through our framework.

One of our members has given us the following feedback on the service supplied by Stuart Webb of Webbs Computer Services:

*"We are very happy with the service we have received from Webbs Computer Services. Stuart has consistently given us top quality support. It is great to have such a trusted local supplier"*

Our HR service provided by Graham Elston of BOSS HR Ltd has been very well utilised this year with 22 groups being supported with a range of HR issues.

## New Technologies

As part of our ongoing cost efficiencies, the trustees have approved the transfer of all of our telephony services to one VOIP system. This will be actioned in 2019/2020 and will enable smarter working across all of our sites.

## Business Development

In April 2019 we commenced delivery of the Infrastructure Contract for Solihull Metropolitan Borough Council. Warwickshire CAVA is delighted to have the opportunity to extend our geographical support into Solihull and support groups from the area.

“ I always find it a **bit daunting** when I take on a **new project**, particularly in an area with which I'm not overly familiar Your **assistance** has **proven** to be a **great help!** ”

### Art Council England - Creative People and Places

Arts Council England identified the boroughs of Nuneaton & Bedworth and North Warwickshire as priority areas for funding. Following a presentation to groups, hosted by Warwickshire CAVA, there was a will from a number of local organisations to make an application. They asked Warwickshire CAVA to come on board initially to help facilitate meetings and help those who had expressed an interest to drive the project forward; due to our independence and partnership-working experience we were then formally approached to lead the planning of the project and become the lead applicant.

As part of the requirements of the funding we helped establish a consortium and a wider stakeholder group, identifying appropriate local organisations, including grassroots community groups, those with arts and heritage project management experience and statutory partners engaged in arts, culture and heritage across northern Warwickshire.

We worked with the consortium to complete the application, distilling everything we had learned from the consultation with local groups. Leading the project across a number of organisations and sectors showcased our partnership building skills, as well as our ability to coordinate a response, delegating roles and responsibilities.

If the bid is successful, it would mean a £1.4m investment in growing a sustainable arts infrastructure across northern Warwickshire area, creating 5 job roles and growing the sector to become more connected and to reach more people. It will see a combination of grassroots community-led arts projects, blended with high-end, large scale exhibitions and events.



# LEARN

Warwickshire CAVA aims to provide high quality training that meets the needs of the voluntary and community sector. We offer an open programme of training covering key topics based on member feedback and local need.

## Safeguarding

This year we have had an increase in requests for in-house training with an encouraging number of trustees recognising their need to learn more about Safeguarding for trustees. This, alongside requests for Safeguarding Awareness workshops has been the main theme.

The Safeguarding Awareness sessions have been adapted to meet the needs of individual organisations along with the generic sessions being provided. During this year we have provided basic 'Safeguarding Awareness' and 'Safeguarding for Trustees' training for 108 attendees from different organisations. The sessions highlighted responsibilities within staff members' roles and in line with their organisational policies and procedures and helped participants to consider different types of abuse for both adults and children and details of external pathways for reporting. Of those trained, 73% stated that their confidence in the subject had increased, with knowledge of the subject being stated as increasing at 85%. With 99% of attendees stating that they would recommend the sessions to others.



We also worked in partnership with Mid Counties Co-operative who provided the funding to enable a bespoke safeguarding session to be delivered for 25 workers and volunteers from organisations across Warwick District that support homeless people. Warwickshire CAVA facilitated an action planning session to incorporate the learning within the attending organisations.

### **Governance Game**

We have adapted the delivery time for our Governance Game. We now offer full or half day sessions and have delivered this in house directly to boards of trustees. Feedback from the sessions about its benefits included:

*It's good to have a variety of experts in the room alongside course content; One of the best courses I've been on; Understanding you're not alone out there!*

We are looking at Licensing the programme so that it can be delivered nationally.

### **Warwickshire CAVA Training Associates Network**

The Warwickshire CAVA Training Associates Network now has 28 members leading to less duplication of training topics and dates and offering our members a suite of options. Efficiency in meeting demand for training has increased thanks to the swift response of the network when a training request comes in.



“**Excellent** thought provoking **course**. It has given me **more idea** of **safeguarding** issues and **making referrals**. I learnt a lot.”

# ENGAGE

Warwickshire CAVA is the main point of contact between third sector organisations and other strategic partners such as local authorities and funders. We are committed to building better relationships between voluntary and community organisations and across the third, faith, public and private sectors.

## Dementia Support

In Rugby Borough and Warwick District, Warwickshire CAVA has been supporting Dementia events, Networks and the dissemination of resources around Dementia support services. An event to support people living with Dementia in Warwick District was organised by Warwickshire CAVA, in partnership with the Pam Britton Trust for Dementia, Warwickshire County Council and Warwick District Council.

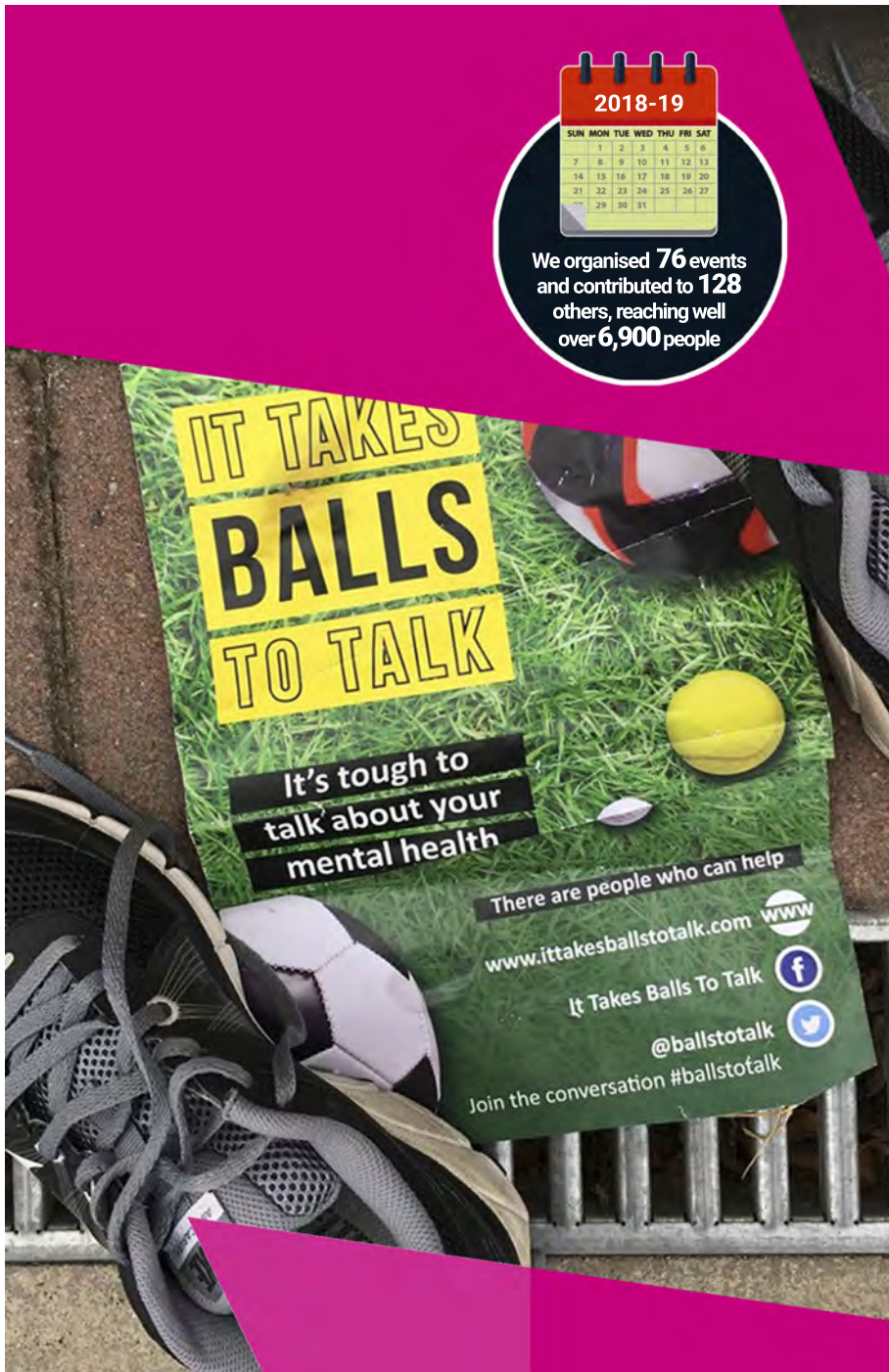
It was attended by over 65 people living with Dementia, their carers and relatives, as well as representatives from more than 20 different support organisations. Everyone had a valuable opportunity to share their ideas and experiences with others, engage with support organisations and participate in a range of activities and workshops.

## South Warwickshire Mental Health Partnership

Started in 2013, this multi-agency partnership led by Warwickshire CAVA is working to improve dissemination of information around mental health support services and improve collaboration between different sectors providing support to people with mental illness.

“ I thought the **event** was **great!**  
Well organised and I **met** some people  
whose **services** will **really help**  
our **service users.** ”





Each year the partnership produces a Directory of Mental Health support services; in 2018 it became a countywide resource. The partnership also organises an annual event. In 2018 it focused on 'People At Risk - Stories of Inspiration' and included presentations from an inspirational organisation 'Silence of Suicide' and an inspirational initiative 'It Takes Balls To Talk' which uses sport themes to encourage people, particularly men, to talk about their wellbeing. The event also included RISE, an example of innovative commissioning and Amy's story about a young woman who transformed her life with the help of Warwickshire CAVA's Talent Match programme.

Participants learned more about National and Local mental health statistics and priorities; older people's mental health, cultural awareness and about the new suicide bereavement support services provided by Kaleidoscope Plus Group. 80 attendees were able to influence commissioners through practical workshops on community hubs and community resilience. Feedback from the event shows that organisations most value the networking opportunity and increasing their knowledge of local and national initiatives.

**Third and Public Sector Partnership Group (TAPSPaG)**

TAPSPaG exists to build better relationships between all sectors for the benefit of Warwickshire residents and helps to create a voice and greater influence for the third sector. Following feedback from groups, a speed matching event took place in 2018 to build relationships between smaller third sector organisations and public sector commissioners. The 2018 annual event focused on 'Celebrating Independence, Investing in Partnerships' highlighting the invaluable and unique role that charities, third sector organisations and groups play in supporting communities, whilst exploring how the public and private sector can maximise opportunities to add value.

# PROJECTS

## Ambition Coventry

The Ambition Coventry programme worked with young people in Coventry between 16 and 29 to help them achieve their ambitions and realise their potential. The project ran until July 2018.

## Rugby Transport Service (RTS)

We continue to host the Rugby Transport Service which works as part of Warwickshire Voluntary Transport, a partnership of voluntary sector community transport operators, they ensure that vulnerable people without access to transport can be supported by a dedicated team of experienced volunteer drivers who, using their own vehicles, provide door to door transport to a wide range of health and social care destinations.



**Rugby Transport Service needs you!**

Are you interested in volunteering?

- Do you have a vehicle you can use to support people to access appointments?
- Do you like to meet new people and make a difference to your local community?
- Do you want to be part of a committed team of volunteers who have been providing transport support for over 20 years?

Our friendly team would love to hear from you...

**Find out more:** T: 01788 561293  
E: transport@wcava.org.uk  
www.wcava.org.uk/transport  
@RTSWCAVA Rugby

Warwickshire CAVA  
15403 North Street, Rugby,  
Warwickshire CV21 2AG

**Strengthening Warwickshire**  
WARWICKSHIRE COMMUNITY AND VOLUNTARY ACTION

**WARWICKSHIRE CAVA**  
COMMUNITY & VOLUNTARY ACTION

**Rugby Transport Service**

We provide transport support in Rugby Borough and surrounding areas.

Our transport service is provided by a dedicated team of volunteer drivers who can support you to access appointments including:

- GP & Hospital appointments
- Luncheon Clubs
- Dentist
- Chiropodist
- Day Care Provision

**Cost of Service**  
The cost is 45p per mile, plus an administration charge per return journey.

**At Rugby Transport Service we are dedicated to getting you to the places you need to go!**

**Find out more:** T: 01788 561293  
E: transport@wcava.org.uk  
www.wcava.org.uk/transport-scheme  
@RTSWCAVA RugbyTransportWCAVA

Warwickshire CAVA  
15403 North Street, Rugby,  
Warwickshire CV21 2AG

**Economic value of volunteering equates to**  
**£1,333,865**  
a year

# Thank you...

We are extremely grateful to all those local communities, individuals and funders who have pledged their support and given generously.

We would especially like to thank the following for their kind support:

Big Lottery Fund  
Comic Relief (via HOECF)  
Coventry and Rugby CCG  
Coventry City Council (ESF)  
Esmee Fairbairn Foundation  
Local Trust  
North Warwickshire Borough Council  
Nuneaton & Bedworth Borough Council

Orbit Heart of England  
Rugby Borough Council  
South Warwickshire CCG  
University Hospital Coventry  
& Warwickshire NHS Trust  
Warwick District Council  
Warwickshire County Council  
Warwickshire North CCG

## Equality Statement

If you require this publication in a different format or language, please contact us on 01926 477512 or write to the address below:

Warwickshire Community And Voluntary Action  
4&6 Clemens Street, Leamington Spa,  
Warwickshire CV31 2DL

Email: [information@wcava.org.uk](mailto:information@wcava.org.uk)

## Acknowledgements

© Poppies (Page 4) Warwick Poppies 2018 Facebook page - <https://www.facebook.com/warwickpoppies2018/>  
© Orbit Housing/The GAP (Page 5) Staff from Orbit Housing transformed the youth room at The GAP in Warwick  
© It Takes Balls To Talk Facebook page (Page 17) - <https://www.facebook.com/ittakesballstotalk>  
© Arts Council England photo ( Page 13) - [https://twitter.com/ace\\_national](https://twitter.com/ace_national)

“ Advice and guidance has been invaluable and has contributed to the continuation of our Charity Thank you! ”



HSBC  [www.hsbc.co.uk](http://www.hsbc.co.uk)

Pay HOPE 4  
THREE HUNDRED AND FORTY  
FIVE POUNDS ONLY

|               |   |
|---------------|---|
| Account Payee | £ |
|---------------|---|

HSBC Bank plc

56 4000000 31900000

# Financial Summary

Year ended 31st March 2019

## UNRESTRICTED FUNDS

|                                     | <u>2018/19</u>        | <u>2017/18</u>         |
|-------------------------------------|-----------------------|------------------------|
|                                     | £                     | £                      |
| Income                              | 651,954               | 661,438                |
| Expenditure (incl. transfers)       | <u>(658,843)</u>      | <u>(685,042)</u>       |
| <b>Surplus (Deficit) - Retained</b> | <b><u>(6,889)</u></b> | <b><u>(23,604)</u></b> |

## DESIGNATED FUNDS

|                                     | <u>2018/19</u>       | <u>2017/18</u>         |
|-------------------------------------|----------------------|------------------------|
|                                     | £                    | £                      |
| Income (incl. transfers)            | 73,500               | 3,880                  |
| Expenditure                         | <u>(13,419)</u>      | <u>(42,627)</u>        |
| <b>Surplus (Deficit) - Retained</b> | <b><u>60,081</u></b> | <b><u>(38,747)</u></b> |

## RESTRICTED FUNDS

|                                     | <u>2018/19</u>        | <u>2017/18</u>         |
|-------------------------------------|-----------------------|------------------------|
|                                     | £                     | £                      |
| Income                              | 1,367,797             | 1,219,140              |
| Expenditure                         | <u>(1,126,570)</u>    | <u>(1,277,929)</u>     |
| <b>Surplus (Deficit) - Retained</b> | <b><u>241,227</u></b> | <b><u>(58,789)</u></b> |

## BALANCE SHEET at 31 March 2019

|                                 | <u>2018/19</u>          | <u>2017/18</u>          |
|---------------------------------|-------------------------|-------------------------|
|                                 | £                       | £                       |
| Fixed Assets                    |                         |                         |
| Property                        | 364,300                 | 373,400                 |
| Other                           | <u>16,406</u>           | <u>16,224</u>           |
|                                 | 380,706                 | 389,624                 |
| Current Assets less Liabilities | <u>918,849</u>          | <u>620,030</u>          |
| <b>Net Assets</b>               | <b><u>1,299,555</u></b> | <b><u>1,009,654</u></b> |
| Unrestricted Funds - General    | 348,885                 | 355,774                 |
| Unrestricted Funds - Designated | 77,807                  | 17,726                  |
| Restricted Funds                | 663,757                 | 422,530                 |
| Endowment Funds                 | <u>209,106</u>          | <u>213,624</u>          |
| <b>Total Funds</b>              | <b><u>1,299,555</u></b> | <b><u>1,009,654</u></b> |

The financial Summary figures in this review have been extracted from the full audited accounts.  
A copy of the full audited accounts is available from [www.wcava.org.uk/annual-reports](http://www.wcava.org.uk/annual-reports)

To obtain a printed copy contact Ruby Sarkaria (Finance Manager) on 01926 477511.



Scan this code with  
your smartphone QR  
reader to read this  
report online.

## Your local office

### North Warwickshire

Community House  
 Coleshill Road  
 Atherstone  
 Warwickshire CV9 1BN

T: 01827 718080

E: [nwinfo@wcava.org.uk](mailto:nwinfo@wcava.org.uk)

 @NorthWCAVA

### Nuneaton & Bedworth

The Newtown Centre  
 Newtown Road  
 Nuneaton  
 Warwickshire CV11 4HG

T: 024 7638 5765

E: [nunbedinfo@wcava.org.uk](mailto:nunbedinfo@wcava.org.uk)

 @NuneatonWCAVA

### Rugby Borough

19 & 20 North Street  
 Rugby  
 Warwickshire  
 CV21 2AG

T: 01788 574258

E: [rugbyinfo@wcava.org.uk](mailto:rugbyinfo@wcava.org.uk)

 @RugbyWCAVA

### Solihull

Lower Ground Floor  
 The Core, Homer Road  
 Solihull  
 West Midlands B91 3RG

T: 0121 312 3717

E: [solihullinfo@wcava.org.uk](mailto:solihullinfo@wcava.org.uk)

 @SolihullCAVA

### Stratford-on-Avon District

Tyler House  
 Tyler Street  
 Stratford Upon Avon  
 Warwickshire CV37 6TY

T: 01789 333767

E: [stratfordinfo@wcava.org.uk](mailto:stratfordinfo@wcava.org.uk)

 @StratfordWCAVA

### Warwick District

4 & 6 Clemens Street  
 Leamington Spa  
 Warwickshire  
 CV31 2DL

T: 01926 477512

E: [warwickinfo@wcava.org.uk](mailto:warwickinfo@wcava.org.uk)

 @WarwickWCAVA

### Community Payroll Service

T: 01827 711102  
 E: [payroll@wcava.org.uk](mailto:payroll@wcava.org.uk)

### Linking Futures

T: 024 7638 5765  
 E: [Linkingfutures@wcava.org.uk](mailto:Linkingfutures@wcava.org.uk)

 @LinkingFuturesW

 Search - Linking Futures

### Rugby Community Transport

T: 01788 561293  
 E: [transport@wcava.org.uk](mailto:transport@wcava.org.uk)

 @RTSWCAVA



[www.wcava.org.uk](http://www.wcava.org.uk)

 [wcavaorg](https://www.facebook.com/wcavaorg)

 [@wcavaorg](https://twitter.com/wcavaorg)

 [YouTube](https://www.youtube.com/channel/UCwvK1p1p1p1p1p1p1p1p1p1) [warwickshirecava](https://www.youtube.com/channel/UCwvK1p1p1p1p1p1p1p1p1p1)

  
 Annual Review  
**2018/19**